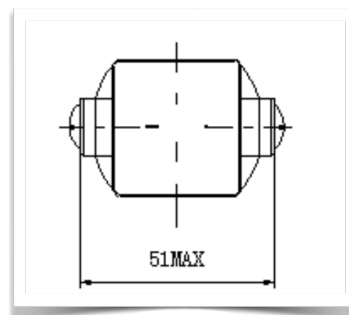
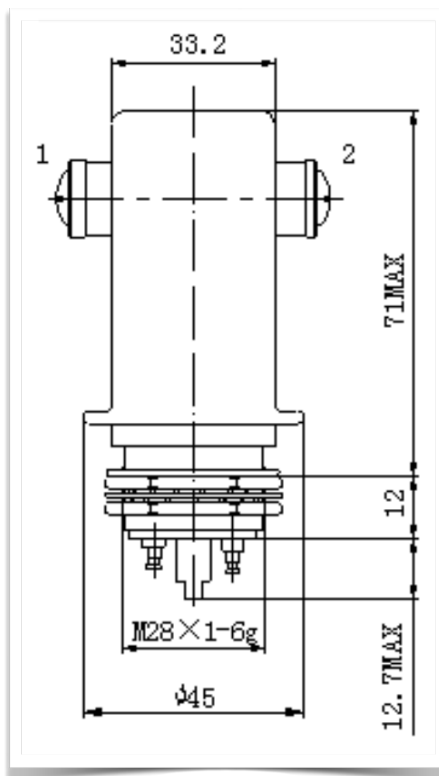


30KV Gas filled high voltage relay

GHR-28 series Vacuum Relay

SF6 gas filling excellent for capacitive discharge and safety dump switch application.



Product Specification		Units	GHR-28A	GHR-28B
Contact Form			A	B
Contact Arrangement			SPST-NO	SPST-NC
Test Voltage,(kV, Peak), Test Max., Contacts & to Base (15 μ A Leakage Max., dc or 60Hz)		KV Peak	30	30
Rated Operating Voltage, (kV,Peak), Contacts & to Base (15 μ A Leakage Max.)	DC or 60Hz	KV Peak	25	25
	2.5MHz	KV Peak	-	
	16MHz	KV Peak	-	
Continuous Current, Carry Max	DC or 60Hz	Amps	30	15
	2.5MHz	Amps	-	
	16MHz	Amps	-	
Coil Hi -Pot (V RMS, 60 Hz)		V	500	500
Resistance, Contact Max @ 1A, 28Vdc		Ω	1	1
Operate Time, Max		ms	18	18
Release Time, Max		ms	10	10
Operating Temperature Ambient		$^{\circ}$ C	-55~ 125	-55~ 125
Shock, 1/2 Sine11ms (Peak)		G's	30	30
Vibration, Sine (10-2000 Hz Peak)		G's	10	10
Mechanical Life		Cycles	1million	1million
Weight		g	273	273

COIL RATINGS

Nominal, Volts dc	24/26.5	12
Pick-up, Volts dc,Max	16	8
Drop-Out, Volts dc,Min	1.5	0.5
Coil Resistance ($\Omega \pm 10\%$)	120	24

* Ratings listed are for 25 $^{\circ}$ C sea level condition