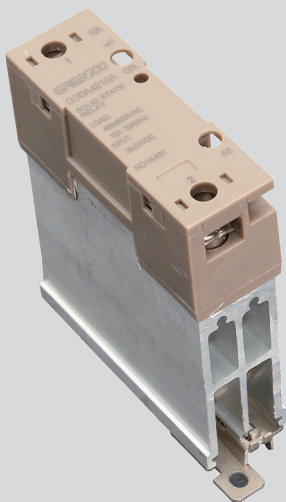


### AC SSR (10A and 60A) of all-in-one radiator



### AC SSR (10A and 60A) of all-in-one radiator

- Zero-cross type.
- Guide rail installing.
- Rated current 10A, 25A
- Enhanced type.
- RC absorption protection.
- Double LED indicate input & output condition.
- Authentication symbol.

### Specification

Model	G3DA4810	G3DA4825
Output	SCR	SCR
Operating Voltage Range (Max. Vrms)	48-600Vac	48-600Vac
Peak voltage(V peak)	1000Vac	1000Vac
Rated operating current (A)	10	25
Off state maximum leakage (mA) (T=25°C Vmax)	3	3
Turn-on voltage (V) max, T=25°C	≤1.2	≤1.2
Static state (off-state) dv/dt(V/us)	500	500
Frequency range (Hz)	47/63	47/63
Input voltage(V)	3.5-24VDC	3.5-24VDC
Input parameter	14-18 (automatic limit current)	14-18 (automatic limit current)
Operate time	≤10ms (0.5cycle) Max	≤10ms (0.5cycle) Max
Response time (opened)	≤10ms (0.5cycle) Max	≤10ms (0.5cycle) Max
Operating temperature(°C)	-40°C -80°C	-40°C -80°C
Isolation bet in & out(Vrms)	≥2000V	≥2000V
Isolation to case(Viso)(Vrms)	≥2000V	≥2000V

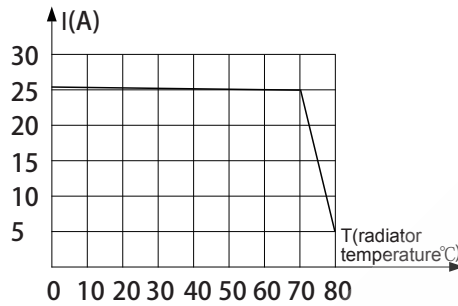
Model	G3DA4840	G3DA4860
Output	SCR	SCR
Operating Voltage Range (Max. Vrms)	48-600Vac	48-600Vac
Peak voltage(V peak)	1000Vac	1000Vac
Rated operating current (A)	40	60
Off state maximum leakage (mA) (T=25°C Vmax)	3	3
Turn-on voltage (V) max, T=25°C	≤1.2	≤1.2
Static state (off-state) dv/dt(V/us)	500	500
Frequency range (Hz)	47/63	47/63
Input voltage(V)	3.5-24VDC	3.5-24VDC
Input parameter	14-18 (automatic limit current)	14-18 (automatic limit current)
Operate time	≤10ms (0.5cycle) Max	≤10ms (0.5cycle) Max
Response time (opened)	≤10ms (0.5cycle) Max	≤10ms (0.5cycle) Max
Operating temperature(°C)	-40°C -80°C	-40°C -80°C
Isolation bet in & out(Vrms)	≥2000V	≥2000V
Isolation to case(Viso)(Vrms)	≥2000V	≥2000V

### AC SSR (10A and 60A) of all-in-one radiator

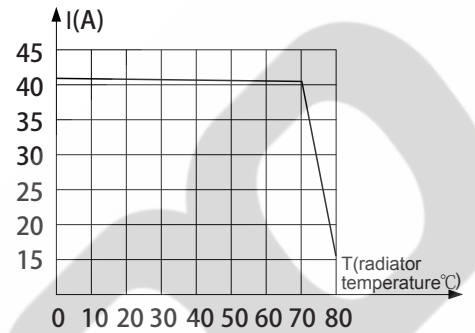


#### Rated value temperature curve

■ G3DA4825



■ G3DA type 40A



#### Dimension

